

SLC6A1 Antibody



PACO07311

Product Information

Size:

50ug

Reactivity:

Human, Mouse, Rat

Source:

Rabbit

Isotype:

IgG

Applications:

ELISA, WB

Recommended dilutions:

ELISA:1:10000-1:20000, WB:1:500-1:2000

Protein Background:**Gene ID:**

SLC6A1

Uniprot

P30531

Synonyms:

Sodium- and chloride-dependent GABA transporter 1 (GAT-1) (Solute carrier family 6 member 1)

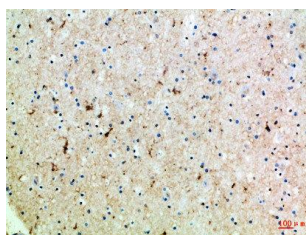
Immunogen:

Synthetic peptide from human protein at AA range: Internal.

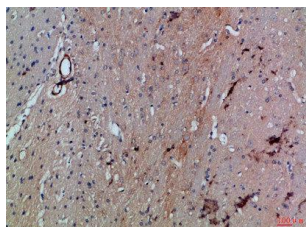
Storage:

PBS, pH 7.4, containing 0.02% sodium azide as Preservative and 50% Glycerol.

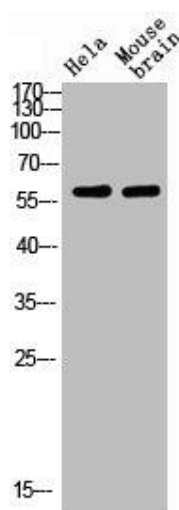
Product Images



Immunohistochemical analysis of paraffin-embedded Human-brain, antibody was diluted at 1:100.



Immunohistochemical analysis of paraffin-embedded Rat-brain, antibody was diluted at 1:100.



Western blot analysis of HELA MOUSE-BRAIN Cell Lysate using antibody. Secondary antibody was diluted at 1:20000.