

# CRHR2 Antibody



PACO07319

---

## Product Information

**Size:**

50ug

**Reactivity:**

Human, Rat

**Source:**

Rabbit

**Isotype:**

IgG

**Applications:**

ELISA, WB

**Recommended dilutions:**

ELISA:1:5000-1:20000, WB:1:500-1:2000

**Protein Background:**

**Gene ID:**

CRHR2

**Uniprot**

Q13324

**Synonyms:**

Corticotropin-releasing factor receptor 2 (CRF-R-2) (CRF-R2) (CRFR-2) (Corticotropin-releasing hormone receptor 2) (CRH-R-2) (CRH-R2)

**Immunogen:**

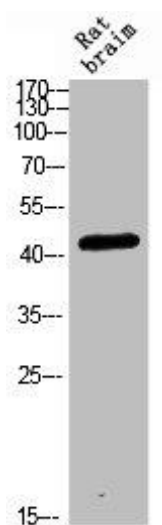
Synthetic peptide from human protein at AA range: 1268-1341.

**Storage:**

PBS, pH 7.4, containing 0.02% sodium azide as Preservative and 50% Glycerol.

## Product Images

---



Western blot analysis of RAT-BRAIN Cell Lysate, antibody was diluted at 1:1000. Secondary antibody was diluted at 1:20000.