

# CALCA Antibody



PACO07322

---

## Product Information

**Size:**

50ug

**Reactivity:**

Human

**Source:**

Rabbit

**Isotype:**

IgG

**Applications:**

ELISA, WB

**Recommended dilutions:**

ELISA:1:10000-1:20000, WB:1:500-1:2000

**Protein Background:****Gene ID:**

CALCA

**Uniprot**

P01258

**Synonyms:**

Calcitonin [Cleaved into: Calcitonin; Katalcalcin (Calcitonin carboxyl-terminal peptide) (CCP) (PDN-21)]

**Immunogen:**

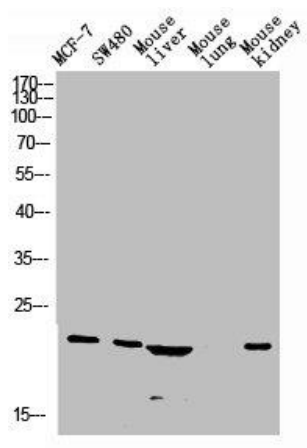
Synthetic peptide from human protein at AA range: 80-141.

**Storage:**

PBS, pH 7.4, containing 0.02% sodium azide as Preservative and 50% Glycerol.

## Product Images

---



Western blot analysis of Jurkat U937 Raji mouse-eye lysate, antibody was diluted at 1000. Secondary antibody was diluted at 1:20000.