

# MAP1LC3B Antibody



PACO07326

---

## Product Information

**Size:**

50ug

**Reactivity:**

Human, Mouse, Rat

**Source:**

Rabbit

**Isotype:**

IgG

**Applications:**

ELISA, WB

**Recommended dilutions:**

ELISA:1:10000-1:20000, WB:1:500-1:2000

**Protein Background:**

**Gene ID:**

MAP1LC3B

**Uniprot**

Q9GZQ8

**Synonyms:**

Microtubule-associated proteins 1A/1B light chain 3B (Autophagy-related protein LC3 B) (Autophagy-related ubiquitin-like modifier LC3 B) (MAP1 light chain 3-like protein 2) (MAP1A/MAP1B light chain 3 B) (MAP1A/MAP1B LC3 B) (Microtubule-associated protein 1 light chain 3 beta)

**Immunogen:**

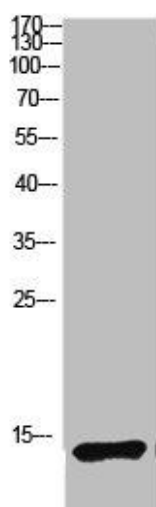
Synthetic peptide from human protein at AA range: 1-50.

**Storage:**

PBS, pH 7.4, containing 0.02% sodium azide as Preservative and 50% Glycerol.

## Product Images

---



Western blot analysis of mouse-kidney mouse-kidney mouse-lung mouse-heart 293T 293T lysate, antibody was diluted at 1000. Secondary antibody was diluted at 1:20000.