

# CD151 Antibody



PACO07361

---

## Product Information

**Size:**

50ug

**Reactivity:**

Human, Mouse, Rat

**Source:**

Rabbit

**Isotype:**

IgG

**Applications:**

ELISA, IHC

**Recommended dilutions:**

ELISA:1:10000-1:20000, IHC-p:1:50-1:300

**Protein Background:****Gene ID:**

CD151

**Uniprot**

P48509

**Synonyms:**

CD151 antigen (GP27) (Membrane glycoprotein SFA-1) (Platelet-endothelial tetraspan antigen 3) (PETA-3) (Tetraspanin-24) (Tspan-24) (CD antigen CD151)

**Immunogen:**

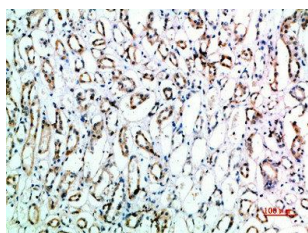
Synthetic peptide from human protein at AA range: 91-140.

**Storage:**

PBS, pH 7.4, containing 0.02% sodium azide as Preservative and 50% Glycerol.

## Product Images

---



Immunohistochemical analysis of paraffin-embedded human-kidney, antibody was diluted at 1:200.