

# KIR2DL5A/KIR2DL5B Antibody



PACO07365

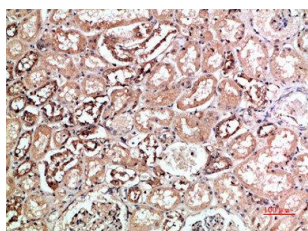
---

## Product Information

<b>Size:</b> 50ug	<b>Protein Background:</b>
<b>Reactivity:</b> Human	<b>Gene ID:</b> KIR2DL5A/KIR2DL5B
<b>Source:</b> Rabbit	<b>Uniprot</b> Q8N109/Q8NHK3
<b>Isotype:</b> IgG	<b>Synonyms:</b>
<b>Applications:</b> ELISA, IHC	<b>Immunogen:</b> Synthetic peptide from human protein at AA range: 121-170.
<b>Recommended dilutions:</b> ELISA:1:10000-1:20000, IHC-p:1:50-1:300	<b>Storage:</b> PBS, pH 7.4, containing 0.02% sodium azide as Preservative and 50% Glycerol.

## Product Images

---



Immunohistochemical analysis of paraffin-embedded human-kidney, antibody was diluted at 1:200.