

CCL15 Antibody



PACO07380

Product Information

Size:

50ug

Reactivity:

Human

Source:

Rabbit

Isotype:

IgG

Applications:

ELISA, IHC

Recommended dilutions:

ELISA:1:10000-1:20000, IHC-p:1:50-1:300

Protein Background:

Gene ID:

CCL15

Uniprot

Q16663

Synonyms:

C-C motif chemokine 15 (Chemokine CC-2) (HCC-2) (Leukotactin-1) (LKN-1) (MIP-1 delta) (Macrophage inflammatory protein 5) (MIP-5) (Mrp-2b) (NCC-3) (Small-inducible cytokine A15) [Cleaved into: CCL15(22-92); CCL15(25-92); CCL15(29-92)]

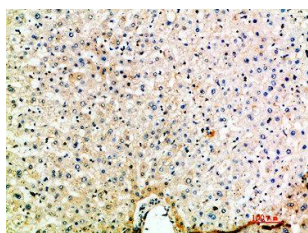
Immunogen:

Synthetic peptide from human protein at AA range: 51-100.

Storage:

PBS, pH 7.4, containing 0.02% sodium azide as Preservative and 50% Glycerol.

Product Images



Immunohistochemical analysis of paraffin-embedded human-liver, antibody was diluted at 1:200.