

UBB/UBC/RPS27A/UBA52 Antibody



PACO07395

Product Information

Size:

50ug

Reactivity:

Human, Mouse, Rat

Source:

Rabbit

Isotype:

IgG

Applications:

ELISA, IHC

Recommended dilutions:

ELISA:1:10000-1:20000, IHC-p:1:50-1:300

Protein Background:**Gene ID:**

UBB/UBC/RPS27A/UBA52

Uniprot

P0CG47/P0CG48/P62979/P62987

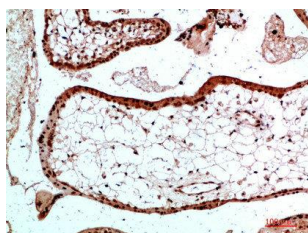
Synonyms:**Immunogen:**

Synthetic peptide from human protein at AA range: 1-50.

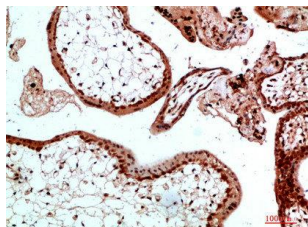
Storage:

PBS, pH 7.4, containing 0.02% sodium azide as Preservative and 50% Glycerol.

Product Images



Immunohistochemical analysis of paraffin-embedded human-placenta, antibody was diluted at 1:200.



Immunohistochemical analysis of paraffin-embedded human-placenta, antibody was diluted at 1:200.