

CD80 Antibody



PACO07405

Product Information

Size:

50ug

Reactivity:

Human

Source:

Rabbit

Isotype:

IgG

Applications:

ELISA, IHC

Recommended dilutions:

ELISA:1:10000-1:20000, IHC-p:1:50-1:300

Protein Background:

Gene ID:

CD80

Uniprot

P33681

Synonyms:

T-lymphocyte activation antigen CD80 (Activation B7-1 antigen) (BB1) (CTLA-4 counter-receptor B7.1) (B7) (CD antigen CD80)

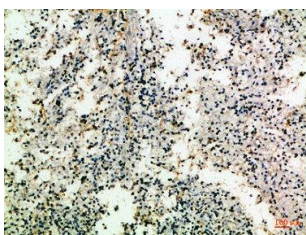
Immunogen:

Synthetic peptide from human protein at AA range: 100-160.

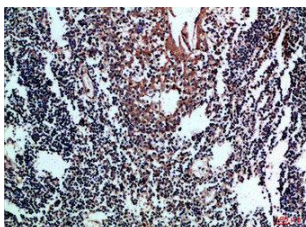
Storage:

PBS, pH 7.4, containing 0.02% sodium azide as Preservative and 50% Glycerol.

Product Images



Immunohistochemical analysis of paraffin-embedded Human-spleen, antibody was diluted at 1:100.



Immunohistochemical analysis of paraffin-embedded Human-tonsil, antibody was diluted at 1:100.