

# MIA Antibody



PACO07406

---

## Product Information

**Size:**

50ug

**Reactivity:**

Human

**Source:**

Rabbit

**Isotype:**

IgG

**Applications:**

ELISA, IHC

**Recommended dilutions:**

ELISA:1:10000-1:20000, IHC-p:1:50-1:300

**Protein Background:**

**Gene ID:**

MIA

**Uniprot**

Q16674

**Synonyms:**

Melanoma-derived growth regulatory protein (Melanoma inhibitory activity protein)

**Immunogen:**

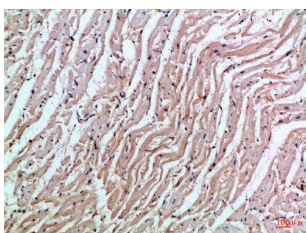
Synthetic peptide from human protein at AA range: 90-131.

**Storage:**

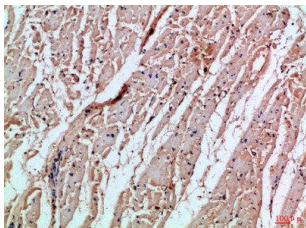
PBS, pH 7.4, containing 0.02% sodium azide as Preservative and 50% Glycerol.

## Product Images

---



Immunohistochemical analysis of paraffin-embedded Human-heart, antibody was diluted at 1:100.



Immunohistochemical analysis of paraffin-embedded Human-heart, antibody was diluted at 1:100.