

CD24 Antibody



PACO07411

Product Information

Size:

50ug

Reactivity:

Human

Source:

Rabbit

Isotype:

IgG

Applications:

ELISA, IHC

Recommended dilutions:

ELISA:1:10000-1:20000, IHC-p:1:50-1:300

Protein Background:

Gene ID:

CD24

Uniprot

P25063

Synonyms:

Signal transducer CD24 (Small cell lung carcinoma cluster 4 antigen) (CD antigen CD24)

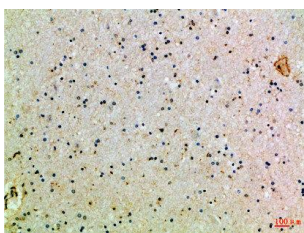
Immunogen:

Synthetic peptide from human protein at AA range: 30-60.

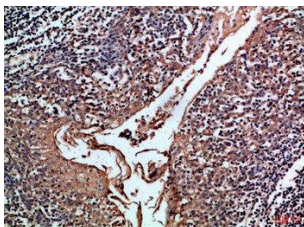
Storage:

PBS, pH 7.4, containing 0.02% sodium azide as Preservative and 50% Glycerol.

Product Images



Immunohistochemical analysis of paraffin-embedded Human-brain, antibody was diluted at 1:100.



Immunohistochemical analysis of paraffin-embedded Human-tonsil, antibody was diluted at 1:100.