

PACO07412

Product Information

Size:

50ug

Reactivity:

Human

Source:

Rabbit

Isotype:

IgG

Applications:

ELISA, IHC

Recommended dilutions:

ELISA:1:10000-1:20000, IHC-p:1:50-1:300

Protein Background:

Gene ID:

CD52

Uniprot

P31358

Synonyms:

CAMPATH-1 antigen (CDw52) (Cambridge pathology 1 antigen) (Epididymal secretory protein E5) (Human epididymis-specific protein 5) (He5) (CD antigen CD52)

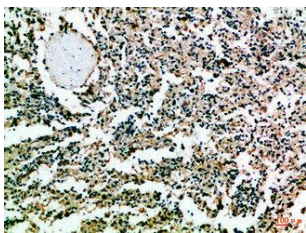
Immunogen:

Synthetic peptide from human protein at AA range: 20-50.

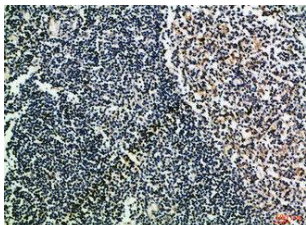
Storage:

PBS, pH 7.4, containing 0.02% sodium azide as Preservative and 50% Glycerol.

Product Images



Immunohistochemical analysis of paraffin-embedded Human-spleen, antibody was diluted at 1:100.



Immunohistochemical analysis of paraffin-embedded Human-tonsil, antibody was diluted at 1:100.