

# KIR2DL5A/KIR2DL5B Antibody



PACO07414

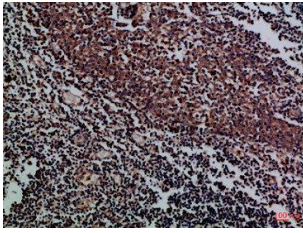
---

## Product Information

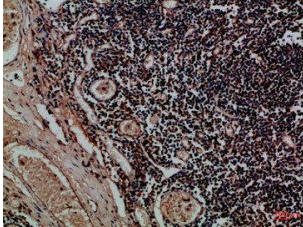
<b>Size:</b>	<b>Protein Background:</b>
50ug	
<b>Reactivity:</b>	<b>Gene ID:</b>
Human	KIR2DL5A/KIR2DL5B
<b>Source:</b>	<b>Uniprot</b>
Rabbit	Q8N109/Q8NHK3
<b>Isotype:</b>	<b>Synonyms:</b>
IgG	
<b>Applications:</b>	<b>Immunogen:</b>
ELISA, IHC	Synthetic peptide from human protein at AA range: 31-80.
<b>Recommended dilutions:</b>	<b>Storage:</b>
ELISA:1:10000-1:20000, IHC-p:1:50-1:300	PBS, pH 7.4, containing 0.02% sodium azide as Preservative and 50% Glycerol.

## Product Images

---



Immunohistochemical analysis of paraffin-embedded Human-tonsil, antibody was diluted at 1:100.



Immunohistochemical analysis of paraffin-embedded Human-tonsil, antibody was diluted at 1:100.