

IL17D Antibody



PACO07421

Product Information

Size:

50ug

Reactivity:

Human

Source:

Rabbit

Isotype:

IgG

Applications:

ELISA, IHC

Recommended dilutions:

ELISA:1:10000-1:20000, IHC-p:1:50-1:300

Protein Background:**Gene ID:**

IL17D

Uniprot

Q8TAD2

Synonyms:

Interleukin-17D (IL-17D) (Interleukin-27) (IL-27)

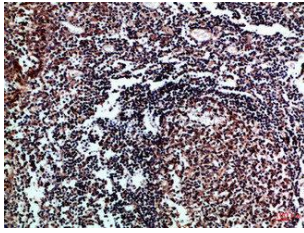
Immunogen:

Synthetic peptide from human protein at AA range: 141-190.

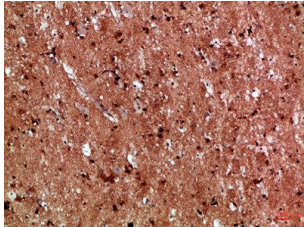
Storage:

PBS, pH 7.4, containing 0.02% sodium azide as Preservative and 50% Glycerol.

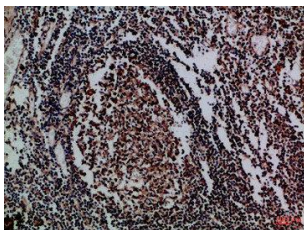
Product Images



Immunohistochemical analysis of paraffin-embedded Human-tonsil, antibody was diluted at 1:100.



Immunohistochemical analysis of paraffin-embedded Human-brain, antibody was diluted at 1:100.



Immunohistochemical analysis of paraffin-embedded Human-tonsil, antibody was diluted at 1:100.