

PACO07422

---

## Product Information

**Size:**

50ug

**Reactivity:**

Human

**Source:**

Rabbit

**Isotype:**

IgG

**Applications:**

ELISA, IHC

**Recommended dilutions:**

ELISA:1:10000-1:20000, IHC-p:1:50-1:300

**Protein Background:**

**Gene ID:**

GZMM

**Uniprot**

P51124

**Synonyms:**

Granzyme M (EC 3.4.21) (Met-1 serine protease) (Hu-Met-1) (Met-ase) (Natural killer cell granular protease)

**Immunogen:**

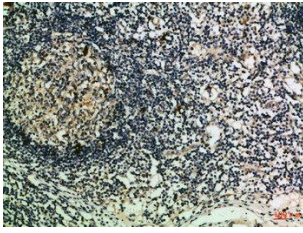
Synthetic peptide from human protein at AA range: 207-256.

**Storage:**

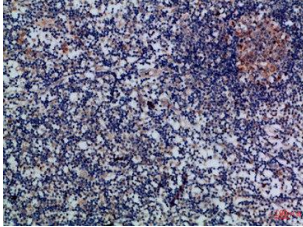
PBS, pH 7.4, containing 0.02% sodium azide as Preservative and 50% Glycerol.

## Product Images

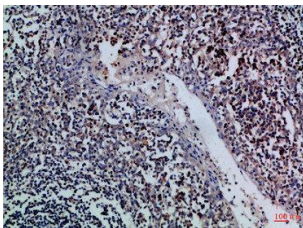
---



Immunohistochemical analysis of paraffin-embedded Human-lymph, antibody was diluted at 1:100.



Immunohistochemical analysis of paraffin-embedded Human-lymph, antibody was diluted at 1:100.



Immunohistochemical analysis of paraffin-embedded Human-tonsil, antibody was diluted at 1:100.