

Acetyl-PARP1 (K521) Antibody

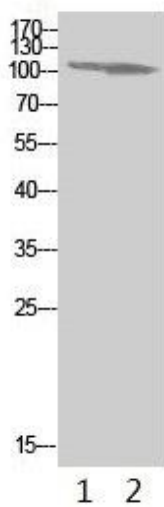


PACO07430

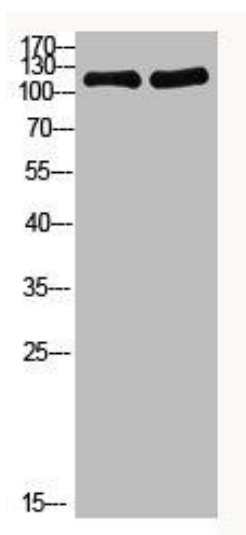
Product Information

Size:	Protein Background:
50ug	
Reactivity:	Gene ID:
Human, Mouse, Rat	PARP1
Source:	Uniprot
Rabbit	P09874
Isotype:	Synonyms:
IgG	Poly [ADP-ribose] polymerase 1 (PARP-1) (EC 2.4.2.30) (ADP-ribosyltransferase diphtheria toxin-like 1) (ARTD1) (NAD(+) ADP-ribosyltransferase 1) (ADPRT 1) (Poly[ADP-ribose] synthase 1)
Applications:	Immunogen:
ELISA, WB	Synthesized Acetyl peptide derived from human PARP-1. at AA range: K521.
Recommended dilutions:	Storage:
ELISA:1:10000-1:20000, WB:1:500-1:2000	Liquid in PBS containing 50% glycerol, 0.5% BSA and 0.02% sodium azide.

Product Images



Western Blot analysis of 1,293t 2, mouse-brain cells using primary antibody diluted at 1:1000(4°C overnight). Secondary antibody: Goat Anti-rabbit IgG IRDye 800(diluted at 1:5000, 25°C, 1 hour).



Western Blot analysis of 1, mouse-heart 3, mouse-brain cells using primary antibody diluted at 1:1000(4°C overnight). Secondary antibody: Goat Anti-rabbit IgG IRDye 800(diluted at 1:5000, 25°C, 1 hour).