

# KCTD7 Antibody



PACO07434

---

## Product Information

**Size:**

50ug

**Reactivity:**

Human, Mouse, Rat

**Source:**

Rabbit

**Isotype:**

IgG

**Applications:**

ELISA, WB

**Recommended dilutions:**

ELISA:1:10000-1:20000, WB:1:500-1:2000

**Protein Background:****Gene ID:**

KCTD7

**Uniprot**

Q96MP8

**Synonyms:**

BTB/POZ domain-containing protein KCTD7

**Immunogen:**

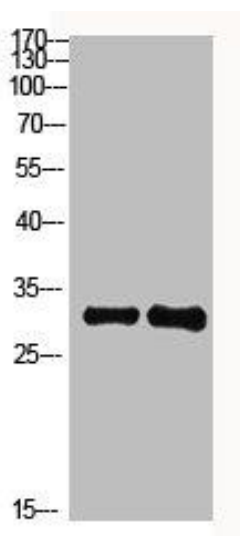
Synthesized peptide derived from human KCTD7. at AA range: 181-230.

**Storage:**

Liquid in PBS containing 50% glycerol, 0.5% BSA and 0.02% sodium azide.

## Product Images

---



Western Blot analysis of 1, mouse-brain 2, mouse-spleen cells using primary antibody diluted at 1:1000(4°C overnight). Secondary antibody: Goat Anti-rabbit IgG IRDye 800( diluted at 1:5000, 25°C, 1 hour).