

# AVPR2 Antibody



PACO07439

---

## Product Information

**Size:**

50ug

**Reactivity:**

Human, Mouse

**Source:**

Rabbit

**Isotype:**

IgG

**Applications:**

ELISA, WB

**Recommended dilutions:**

ELISA:1:10000-1:20000, WB:1:500-1:2000

**Protein Background:**

**Gene ID:**

AVPR2

**Uniprot**

P30518

**Synonyms:**

Vasopressin V2 receptor (V2R) (AVPR V2) (Antidiuretic hormone receptor) (Renal-type arginine vasopressin receptor)

**Immunogen:**

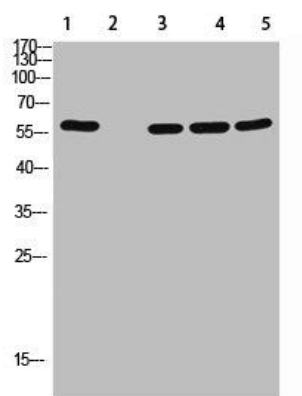
Synthesized peptide derived from human AVP Receptor V2. at AA range: 1-50.

**Storage:**

Liquid in PBS containing 50% glycerol, 0.5% BSA and 0.02% sodium azide.

## Product Images

---



Western Blot analysis of 1, mouse-lung 2, mouse-spleen 3, mouse-kidney 4, mouse-heart 5, 293 cells using primary antibody diluted at 1:500(4°C overnight). Secondary antibody: Goat Anti-rabbit IgG IRDye 800( diluted at 1:5000, 25°C, 1 hour).