

COL13A1 Antibody

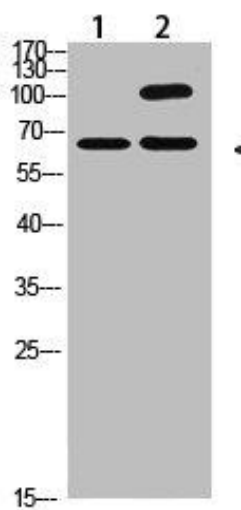


PACO07451

Product Information

Size: 50ug	Protein Background:
Reactivity: Human, Mouse	Gene ID: COL13A1
Source: Rabbit	Uniprot Q5TAT6
Isotype: IgG	Synonyms: Collagen alpha-1(XIII) chain (COLXIII A1)
Applications: ELISA, WB	Immunogen: Synthesized peptide derived from human COL13A1. at AA range: 41-90.
Recommended dilutions: ELISA:1:10000-1:20000, WB:1:500-1:2000	Storage: Liquid in PBS containing 50% glycerol, 0.5% BSA and 0.02% sodium azide.

Product Images



Western Blot analysis of 1, HeLa 2, Mouse-kidney cells using primary antibody diluted at 1:2000(4°C overnight). Secondary antibody: Goat Anti-rabbit IgG IRDye 800(diluted at 1:5000, 25°C, 1 hour).