

KRT14/KRT17 Antibody



PACO07457

Product Information

Size:

50ug

Reactivity:

Human, Mouse, Rat

Source:

Rabbit

Isotype:

IgG

Applications:

ELISA, WB

Recommended dilutions:

ELISA:1:10000, WB:1:500-1:10000

Protein Background:

Gene ID:

KRT14/KRT17

Uniprot

P02533/Q04695

Synonyms:

KRT14

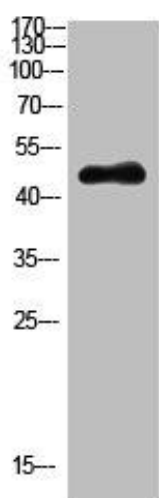
Immunogen:

Synthetic peptide from AA range: 261-310.

Storage:

PBS, pH 7.4, containing 0.02% sodium azide as Preservative and 50% Glycerol.

Product Images



Western Blot analysis of HEPG2 cells using Antibody diluted at 1000.