

COL17A1 Antibody



PACO07461

Product Information

Size:

50ug

Reactivity:

Human

Source:

Rabbit

Isotype:

IgG

Applications:

ELISA, WB

Recommended dilutions:

ELISA:1:10000, WB:1:500-1:10000

Protein Background:

Gene ID:

COL17A1

Uniprot

Q9UMD9

Synonyms:

COL17A1 BP180 BPAG2

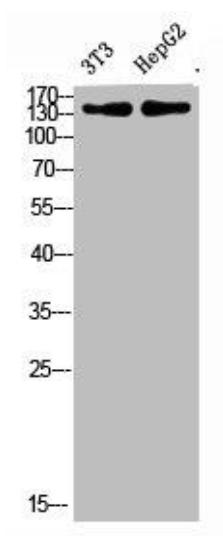
Immunogen:

Synthetic peptide from AA range: 481-530.

Storage:

PBS, pH 7.4, containing 0.02% sodium azide as Preservative and 50% Glycerol.

Product Images



Western Blot analysis of 3T3, hepg2 cells using Antibody diluted at 500.