

### Product Information

**Size:**

50ul

**Reactivity:**

Human

**Source:**

Rabbit

**Isotype:**

IgG

**Applications:**

ELISA, IHC

**Recommended dilutions:**

ELISA:1:500-1:2000, IHC:1:5-1:20

**Protein Background:**

KLK3 is a member of the kallikrein-related peptidase family secreted by the epithelial cells of the prostate gland and lead to the liquefaction of the seminal coagulum. It is thought to function normally in the liquefaction of seminal coagulum, presumably by hydrolysis of the high molecular mass seminal vesicle protein. Serum level of this protein, called PSA in the clinical setting, is useful in the diagnosis and monitoring of prostatic carcinoma.

**Gene ID:**

KLK3

**Uniprot**

P07288

**Synonyms:**

Kallikrein-3

**Immunogen:**

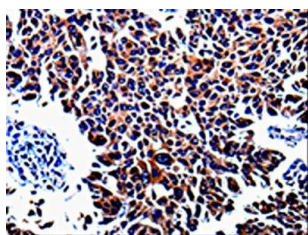
Fusion protein of human KLK3.

**Storage:**

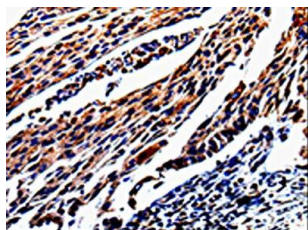
-20&deg; C, pH7.4 PBS, 0.05% NaN<sub>3</sub>, 40% Glycerol

## Product Images

---



The image is immunohistochemistry of paraffin-embedded Human lung cancer tissue using PACO13786(KLK3 Antibody) at dilution 1/25. (Original magnification: x—200).



The image is immunohistochemistry of paraffin-embedded Human cervical cancer tissue using PACO13786(KLK3 Antibody) at dilution 1/25. (Original magnification: x—200).