

## Product Information

**Size:**

50ul

**Reactivity:**

Human

**Source:**

Rabbit

**Isotype:**

IgG

**Applications:**

ELISA, IHC

**Recommended dilutions:**

ELISA:1:500-1:2000, IHC:1:5-1:20

**Protein Background:**

This gene is a member of the MAGEA gene family. The members of this family encode proteins with 50 to 80% sequence identity to each other. The promoters and first exons of the MAGEA genes show considerable variability, suggesting that the existence of this gene family enables the same function to be expressed under different transcriptional controls. The MAGEA genes are clustered at chromosomal location Xq28. They have been implicated in some hereditary disorders, such as dyskeratosis congenita. At least four variants encoding the same protein have been found for this gene.

**Gene ID:**

MAGEA4

**Uniprot**

P43358

**Synonyms:**

Melanoma-associated antigen 4

**Immunogen:**

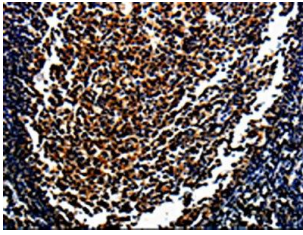
Fusion protein of human MAGEA4.

**Storage:**

-20&deg; C, pH7.4 PBS, 0.05% NaN3, 40% Glycerol

## Product Images

---



The image on the left is immunohistochemistry of paraffin-embedded Human tonsil tissue using PACO13794(MAGEA4 Antibody) at dilution 1/10, on the right is treated with fusion protein. (Original magnification: x—200).