

Product Information

Size:

50ul

Reactivity:

Human

Source:

Rabbit

Isotype:

IgG

Applications:

ELISA, IHC

Recommended dilutions:

ELISA:1:500-1:5000, IHC:1:5-1:20

Protein Background:

This gene encodes a mature peptide that is an active cyclic heptapeptide absolutely conserved from lamprey to human. The active peptide acts as a vasoconstrictor and is expressed only in brain tissue. Despite the gene family name similarity, this gene is not homologous to urocortin, a member of the sauvagine/corticotropin-releasing factor/urotensin I family. Most of the proprotein is cleaved to make the mature peptide. Transcript variants encoding different preproprotein isoforms have been described for this gene.

Gene ID:

UTS2

Uniprot

O95399

Synonyms:

Urotensin 2

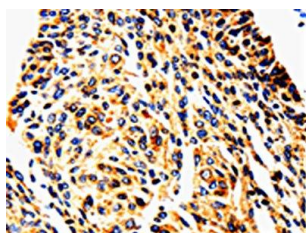
Immunogen:

Fusion protein of human UTS2.

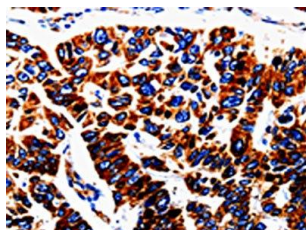
Storage:

-20°C; C, pH7.4 PBS, 0.05% NaN₃, 40% Glycerol

Product Images



The image is immunohistochemistry of paraffin-embedded Human cervical cancer tissue using PACO13810(UTS2 Antibody) at dilution 1/50. (Original magnification: x—200).



The image is immunohistochemistry of paraffin-embedded Human lung cancer tissue using PACO13810(UTS2 Antibody) at dilution 1/50. (Original magnification: x—200).