

### Product Information

**Size:**

50ul

**Reactivity:**

Human

**Source:**

Rabbit

**Isotype:**

IgG

**Applications:**

ELISA, IHC

**Recommended dilutions:**

ELISA:1:500-1:10000, IHC:1:5-1:20

**Protein Background:**

This gene encodes a mature peptide that is an active cyclic heptapeptide absolutely conserved from lamprey to human. The active peptide acts as a vasoconstrictor and is expressed only in brain tissue. Despite the gene family name similarity, this gene is not homologous to urocortin, a member of the sauvagine/corticotropin-releasing factor/urotensin I family. Most of the proprotein is cleaved to make the mature peptide. Transcript variants encoding different preproprotein isoforms have been described for this gene.

**Gene ID:**

UTS2

**Uniprot**

O95399

**Synonyms:**

Urotensin 2

**Immunogen:**

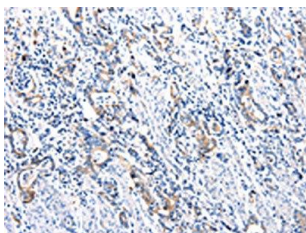
Fusion protein of human UTS2.

**Storage:**

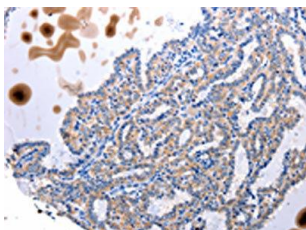
-20°C; C, pH7.4 PBS, 0.05% NaN<sub>3</sub>, 40% Glycerol

## Product Images

---



The image is immunohistochemistry of paraffin-embedded Human stomach cancer tissue using PACO13811(UTS2 Antibody) at dilution 1/100. (Original magnification: x—200).



The image is immunohistochemistry of paraffin-embedded Human thyroid cancer tissue using PACO13811(UTS2 Antibody) at dilution 1/100. (Original magnification: x—200).