

PACO13813

---

## Product Information

**Size:**

50ul

**Reactivity:**

Human, Mouse, Rat

**Source:**

Rabbit

**Isotype:**

IgG

**Applications:**

ELISA, WB, IHC

**Recommended dilutions:**

ELISA:1:500-1:10000, WB:1:500-1:2000,  
IHC:1:5-1:20

**Protein Background:**

This gene product belongs to the 14-3-3 family of proteins which mediate signal transduction by binding to phosphoserine-containing proteins. This highly conserved protein family is found in both plants and mammals, and this protein is 100% identical to the mouse ortholog. It interacts with CDC25 phosphatases, RAF1 and IRS1 proteins, suggesting its role in diverse biochemical activities related to signal transduction, such as cell division and regulation of insulin sensitivity. It has also been implicated in the pathogenesis of small cell lung cancer. Two transcript variants, one protein-coding and the other non-protein-coding, have been found for this gene.

**Gene ID:**

YWHAE

**Uniprot**

P62258

**Synonyms:**

Tyrosine 3-monooxygenase/tryptophan 5-monooxygenase activation protein, epsilon polypeptide

**Immunogen:**

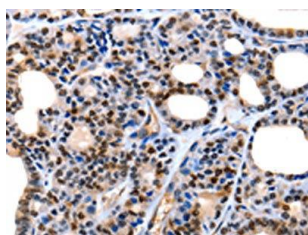
Fusion protein of human YWHAE.

**Storage:**

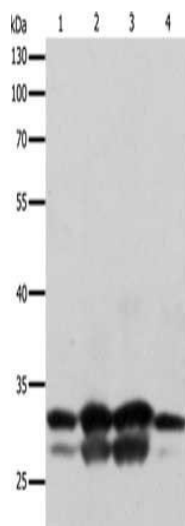
-20&deg; C, pH7.4 PBS, 0.05% NaN3, 40% Glycerol

## Product Images

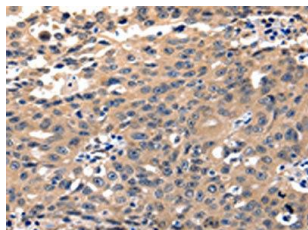
---



The image on the left is immunohistochemistry of paraffin-embedded Human thyroid cancer tissue using PACO13813(YWHAE Antibody) at dilution 1/5, on the right is treated with fusion protein. (Original magnification: x—200).



Gel: 10%SDS-PAGE, Lysate: 30 &mu; g, Lane 1-4: Hela cells, 293T cells, Human fetal brain tissue, Mouse brain tissue, Primary antibody: PACO13813(YWHAE Antibody) at dilution 1/250, Secondary antibody: Goat anti rabbit IgG at 1/8000 dilution, Exposure time: 10 seconds.



The image on the left is immunohistochemistry of paraffin-embedded Human ovarian cancer tissue using PACO13813(YWHAE Antibody) at dilution 1/5, on the right is treated with fusion protein. (Original magnification: x—200).