

ALDH1A1/ALDH1A2/ALDH1A3 Antibody



PACO13833

Product Information

Size:

50ul

Reactivity:

Human

Source:

Rabbit

Isotype:

IgG

Applications:

ELISA, WB, IHC

Recommended dilutions:

ELISA:1:1000-1:5000, WB:1:500-1:1000,
IHC:1:20-1:50

Protein Background:

This protein belongs to the aldehyde dehydrogenase family of proteins. The product of this gene is an enzyme that catalyzes the synthesis of retinoic acid, (RA) from retinaldehyde. Retinoic acid, the active derivative of vitamin A (retinol), is a hormonal signaling molecule that functions in developing and adult tissues. The studies of a similar mouse gene suggest that this enzyme and the cytochrome CYP26A1, concurrently establish local embryonic retinoic acid, levels which facilitate posterior organ development and prevent spina bifida. Four transcript variants encoding distinct isoforms have been identified for this gene.

Gene ID:

ALDH1A1/ALDH1A2/ALDH1A3

Uniprot

P00352/O94788/P47895

Synonyms:

Aldehyde dehydrogenase 1 family, member A1/2/3

Immunogen:

Fusion protein of human ALDH1A1/ALDH1A2/ALDH1A3.

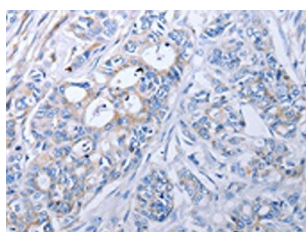
Storage:

-20° C, pH7.4 PBS, 0.05% NaN3, 40% Glycerol

Product Images



Gel: 10%SDS-PAGE, Lysate: 30 μ g, Lane: Human liver cancer tissue, Primary antibody: PACO13833(ALDH1A1/ALDH1A2/ALDH1A3 Antibody) at dilution 1/450, Secondary antibody: Goat anti rabbit IgG at 1/8000 dilution, Exposure time: 1 minute.



The image on the left is immunohistochemistry of paraffin-embedded Human colon cancer tissue using PACO13833(ALDH1A1/ALDH1A2/ALDH1A3 Antibody) at dilution 1/40, on the right is treated with fusion protein. (Original magnification: x—200).