

Product Information

Size:

50ul

Reactivity:

Human, Mouse

Source:

Rabbit

Isotype:

IgG

Applications:

ELISA, WB, IHC

Recommended dilutions:

ELISA:1:500-1:2000, WB:1:250-1:1000,
IHC:1:15-1:60

Protein Background:

The protein encoded by this gene is a member of the STAT protein family. In response to cytokines and growth factors, STAT family members are phosphorylated by the receptor associated kinases, and then form homo- or heterodimers that translocate to the cell nucleus where they act as transcription activators. This protein can be activated by various ligands including interferon-alpha, interferon-gamma, EGF, PDGF and IL6. This protein mediates the expression of a variety of genes, which is thought to be important for cell viability in response to different cell stimuli and pathogens. Two alternatively spliced transcript variants encoding distinct isoforms have been described.

Gene ID:

STAT1

Uniprot

P42224

Synonyms:

Signal transducer and activator of transcription 1-alpha/beta

Immunogen:

Fusion protein of human STAT1.

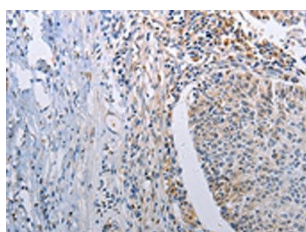
Storage:

-20° C, pH7.4 PBS, 0.05% NaN3, 40% Glycerol

Product Images



Gel: 8%SDS-PAGE, Lysate: 30 μ g, Lane: NIH/3T3 cells, Primary antibody: PACO13873(STAT1 Antibody) at dilution 1/250, Secondary antibody: Goat anti rabbit IgG at 1/8000 dilution, Exposure time: 10 seconds.



The image on the left is immunohistochemistry of paraffin-embedded Human lung cancer tissue using PACO13873(STAT1 Antibody) at dilution 1/30, on the right is treated with fusion protein. (Original magnification: x—200).