

PACO13901

Product Information

Size:

50ul

Reactivity:

Human, Mouse

Source:

Rabbit

Isotype:

IgG

Applications:

ELISA, IHC

Recommended dilutions:

ELISA:1:500-1:5000, IHC:1:10-1:50

Protein Background:

The protein encoded by this gene is a member of the Toll-like receptor (TLR) family which plays a fundamental role in pathogen recognition and activation of innate immunity. TLRs are highly conserved from Drosophila to humans and share structural and functional similarities. They recognize pathogen-associated molecular patterns (PAMPs) that are expressed on infectious agents, and mediate the production of cytokines necessary for the development of effective immunity. The various TLRs exhibit different patterns of expression. This gene is predominantly expressed in lung, placenta, and spleen, and lies in close proximity to another family member, TLR8, on chromosome X.

Gene ID:

TLR7

Uniprot

Q9NYK1

Synonyms:

Toll-like receptor 7

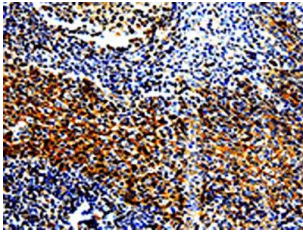
Immunogen:

Fusion protein of human TLR7.

Storage:

-20° C, pH7.4 PBS, 0.05% NaN3, 40% Glycerol

Product Images



The image is immunohistochemistry of paraffin-embedded Human tonsil tissue using PACO13901(TLR7 Antibody) at dilution 1/10. (Original magnification: 200).