

PACO13926

Product Information

Size:

50ul

Reactivity:

Human

Source:

Rabbit

Isotype:

IgG

Applications:

ELISA, IHC

Recommended dilutions:

ELISA:1:2000-1:5000, IHC:1:50-1:200

Protein Background:

This gene encodes a member of the synuclein family of proteins which are believed to be involved in the pathogenesis of neurodegenerative diseases. Mutations in this gene have also been associated with breast tumor development.

Gene ID:

SNCG

Uniprot

O76070

Synonyms:

synuclein, gamma (breast cancer-specific protein 1)

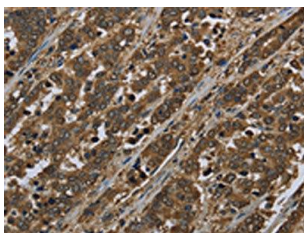
Immunogen:

Fusion protein of human SNCG.

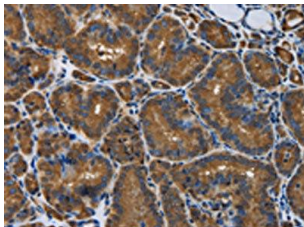
Storage:

-20° C, pH7.4 PBS, 0.05% NaN₃, 40% Glycerol

Product Images



The image is immunohistochemistry of paraffin-embedded Human liver cancer tissue using PACO13926(SNCG Antibody) at dilution 1/50. (Original magnification: x—200).



The image is immunohistochemistry of paraffin-embedded Human thyroid cancer tissue using PACO13926(SNCG Antibody) at dilution 1/50. (Original magnification: x—200).