

PACO13966

---

## Product Information

**Size:**

50ul

**Reactivity:**

Human

**Source:**

Rabbit

**Isotype:**

IgG

**Applications:**

ELISA, IHC

**Recommended dilutions:**

ELISA:1:1000-1:10000, IHC:1:25-1:100

**Protein Background:**

The protein encoded by this gene belongs to the cytokine receptor family. It is an accessory chain essential for the active interleukin 10 receptor complex. Coexpression of this and IL10RA proteins has been shown to be required for IL10-induced signal transduction. This gene and three other interferon receptor genes, IFAR2, IFNAR1, and IFNGR2, form a class II cytokine receptor gene cluster located in a small region on chromosome 21.

**Gene ID:**

IL10RB

**Uniprot**

Q08334

**Synonyms:**

Interleukin-10 receptor subunit beta

**Immunogen:**

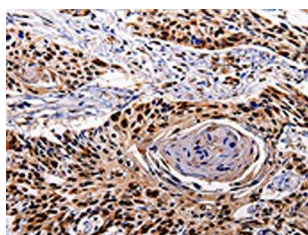
Fusion protein of human IL10RB.

**Storage:**

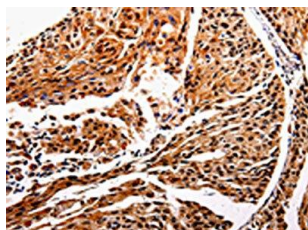
-20&deg; C, pH7.4 PBS, 0.05% NaN3, 40% Glycerol

## Product Images

---



The image is immunohistochemistry of paraffin-embedded Human esophagus cancer tissue using PACO13966(IL10RB Antibody) at dilution 1/20. (Original magnification: x—200).



The image is immunohistochemistry of paraffin-embedded Human cervical cancer tissue using PACO13966(IL10RB Antibody) at dilution 1/20. (Original magnification: x—200).