

PACO14000

---

## Product Information

**Size:**

50ul

**Reactivity:**

Human, Mouse

**Source:**

Rabbit

**Isotype:**

IgG

**Applications:**

ELISA, IHC

**Recommended dilutions:**

ELISA:1:500-1:2000, IHC:1:10-1:50

**Protein Background:**

ABCB5 belongs to the ATP-binding cassette (ABC) transporter superfamily of integral membrane proteins. These proteins participate in ATP-dependent transmembrane transport of structurally diverse molecules ranging from small ions, sugars, and peptides to more complex organic molecules.

**Gene ID:**

ABCB5

**Uniprot**

Q2M3G0

**Synonyms:**

ATP-binding cassette sub-family B member 5

**Immunogen:**

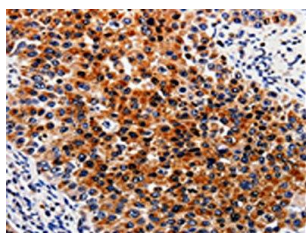
Fusion protein of human ABCB5.

**Storage:**

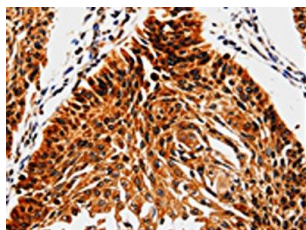
-20&deg; C, pH7.4 PBS, 0.05% NaN<sub>3</sub>, 40% Glycerol

## Product Images

---



The image is immunohistochemistry of paraffin-embedded Human renal cancer tissue using PACO14000(ABCB5 Antibody) at dilution 1/10. (Original magnification: x—200).



The image is immunohistochemistry of paraffin-embedded Human cervical cancer tissue using PACO14000(ABCB5 Antibody) at dilution 1/10. (Original magnification: x—200).