

KRT19 Antibody



PACO14005

Product Information

Size:

50ul

Reactivity:

Human, Mouse, Rat

Source:

Rabbit

Isotype:

IgG

Applications:

ELISA, WB, IHC

Recommended dilutions:

ELISA:1:1000-1:5000, WB:1:500-1:2000,
IHC:1:100-1:300

Protein Background:

The protein encoded by this gene is a member of the keratin family. The keratins are intermediate filament proteins responsible for the structural integrity of epithelial cells and are subdivided into cytokeratins and hair keratins. The type I cytokeratins consist of acid, c proteins which are arranged in pairs of heterotypic keratin chains. Unlike its related family members, this smallest known acid, c cytokeratin is not paired with a basic cytokeratin in epithelial cells. It is specifically expressed in the periderm, the transiently superficial layer that envelopes the developing epidermis. The type I cytokeratins are clustered in a region of chromosome 17q12-q21.

Gene ID:

KRT19

Uniprot

P08727

Synonyms:

keratin 19

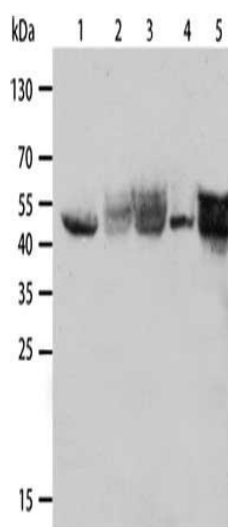
Immunogen:

Fusion protein of human KRT19.

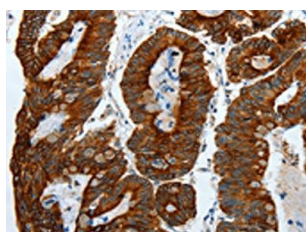
Storage:

-20° C, pH7.4 PBS, 0.05% NaN3, 40% Glycerol

Product Images



Gel: 12%SDS-PAGE, Lysate: 40 μ g, Lane 1-5: A431 cells, Hela cells, Lovo cells, Human fetal lung tissue, Human adult liver tissue, Primary antibody: PACO14005(KRT19 Antibody) at dilution 1/1000, Secondary antibody: Goat anti rabbit IgG at 1/8000 dilution, Exposure time: 30 seconds.



The image on the left is immunohistochemistry of paraffin-embedded Human colon cancer tissue using PACO14005(KRT19 Antibody) at dilution 1/55, on the right is treated with fusion protein. (Original magnification: x—200).