

PACO14029

---

## Product Information

**Size:**

50ul

**Reactivity:**

Human

**Source:**

Rabbit

**Isotype:**

IgG

**Applications:**

ELISA, IHC

**Recommended dilutions:**

ELISA:1:1000-1:5000, IHC:1:25-1:100

**Protein Background:**

The protein encoded by this gene is a plasma protease inhibitor and a member of the serpin superfamily. This protein inhibits thrombin as well as other activated serine proteases of the coagulation system, and it regulates the blood coagulation cascade. The protein includes two functional domains: the heparin binding-domain at the N-terminus of the mature protein, and the reactive site domain at the C-terminus. The inhibitory activity is enhanced by the presence of heparin. More than 120 mutations have been identified for this gene, many of which are known to cause antithrombin-III deficiency.

**Gene ID:**

SERPINC1

**Uniprot**

P01008

**Synonyms:**

serpin peptidase inhibitor, clade C (antithrombin), member 1

**Immunogen:**

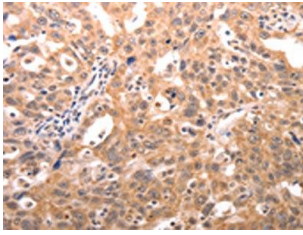
Fusion protein of human SERPINC1.

**Storage:**

-20&deg; C, pH7.4 PBS, 0.05% NaN3, 40% Glycerol

## Product Images

---



The image on the left is immunohistochemistry of paraffin-embedded Human ovarian cancer tissue using PACO14029(SERPINC1 Antibody) at dilution 1/30, on the right is treated with fusion protein. (Original magnification: x—200).