

PACO14043

---

## Product Information

**Size:**

50ul

**Reactivity:**

Human, Mouse, Rat

**Source:**

Rabbit

**Isotype:**

IgG

**Applications:**

ELISA, WB, IHC

**Recommended dilutions:**

ELISA:1:2000-1:5000, WB:1:200-1:1000,  
IHC:1:50-1:100

**Protein Background:**

This gene encodes a member of the annexin family of evolutionarily conserved Ca<sup>2+</sup> and phospholipid binding proteins. The encoded protein may function as an anticoagulant that indirectly inhibits the thromboplastin-specific complex. Overexpression of this gene has been associated with acute myelocytic leukemia. A highly similar duplicated copy of this gene is found in close proximity on the long arm of chromosome 10.

**Gene ID:**

ANXA8

**Uniprot**

P13928

**Synonyms:**

annexin A8

**Immunogen:**

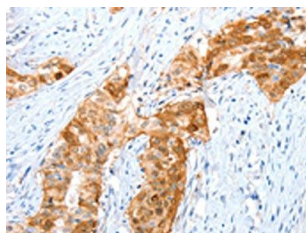
Fusion protein of human ANXA8.

**Storage:**

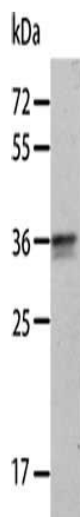
-20°C; C, pH7.4 PBS, 0.05% NaN<sub>3</sub>, 40% Glycerol

## Product Images

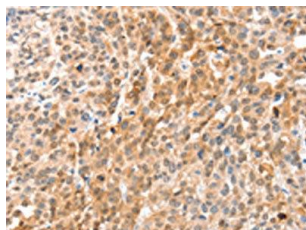
---



The image on the left is immunohistochemistry of paraffin-embedded Human cervical cancer tissue using PACO14043(ANXA8 Antibody) at dilution 1/35, on the right is treated with fusion protein. (Original magnification: x—200).



Gel: 10%SDS-PAGE, Lysate: 40 &mu; g, Lane: A549 cells, Primary antibody: PACO14043(ANXA8 Antibody) at dilution 1/300, Secondary antibody: Goat anti rabbit IgG at 1/8000 dilution, Exposure time: 2 minutes.



The image on the left is immunohistochemistry of paraffin-embedded Human esophagus cancer tissue using PACO14043(ANXA8 Antibody) at dilution 1/35, on the right is treated with fusion protein. (Original magnification: x—200).