

Product Information

Size:

50ul

Reactivity:

Human, Mouse, Rat

Source:

Rabbit

Isotype:

IgG

Applications:

ELISA, IHC

Recommended dilutions:

ELISA:1:2000-1:5000, IHC:1:50-1:200

Protein Background:

This gene is a member of the type II keratin family clustered on the long arm of chromosome 12. Type I and type II keratins heteropolymerize to form intermediate-sized filaments in the cytoplasm of epithelial cells. The product of this gene typically dimerizes with keratin 18 to form an intermediate filament in simple single-layered epithelial cells. This protein plays a role in maintaining cellular structural integrity and also functions in signal transduction and cellular differentiation. Mutations in this gene cause cryptogenic cirrhosis. Alternatively spliced transcript variants have been found for this gene.

Gene ID:

KRT8

Uniprot

P05787

Synonyms:

keratin 8

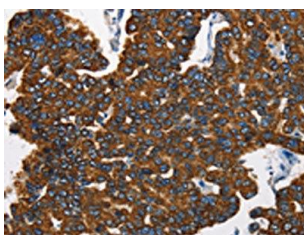
Immunogen:

Fusion protein of human KRT8.

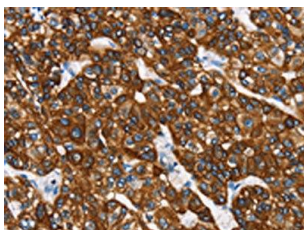
Storage:

-20° C, pH7.4 PBS, 0.05% NaN₃, 40% Glycerol

Product Images



The image is immunohistochemistry of paraffin-embedded Human breast cancer tissue using PACO14050(KRT8 Antibody) at dilution 1/40. (Original magnification: x—200).



The image is immunohistochemistry of paraffin-embedded Human liver cancer tissue using PACO14050(KRT8 Antibody) at dilution 1/40. (Original magnification: x—200).