

# KRT15 Antibody



PACO14053

---

## Product Information

**Size:**

50ul

**Reactivity:**

Human, Mouse, Rat

**Source:**

Rabbit

**Isotype:**

IgG

**Applications:**

ELISA, WB

**Recommended dilutions:**

ELISA:1:1000-1:5000, WB:1:500-1:2000

**Protein Background:**

The protein encoded by this gene is a member of the keratin gene family. The keratins are intermediate filament proteins responsible for the structural integrity of epithelial cells and are subdivided into cytokeratins and hair keratins. Most of the type I cytokeratins consist of acid, c proteins which are arranged in pairs of heterotypic keratin chains and are clustered in a region on chromosome 17q21.2.

**Gene ID:**

KRT15

**Uniprot**

P19012

**Synonyms:**

Keratin, type I cytoskeletal 15

**Immunogen:**

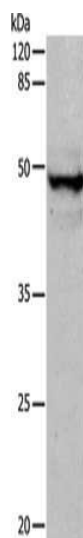
Fusion protein of human KRT15.

**Storage:**

-20&deg; C, pH7.4 PBS, 0.05% NaN<sub>3</sub>, 40% Glycerol

## Product Images

---



Gel: 10%SDS-PAGE, Lysate: 30  $\mu$ g, Lane: Mouse thymus tissue, Primary antibody: PACO14053(KRT15 Antibody) at dilution 1/400, Secondary antibody: Goat anti rabbit IgG at 1/8000 dilution, Exposure time: 1.5 minutes.