

# ATF2 Antibody



PACO14116

---

## Product Information

**Size:**

50ul

**Reactivity:**

Human, Mouse, Rat

**Source:**

Rabbit

**Isotype:**

IgG

**Applications:**

ELISA, IHC

**Recommended dilutions:**

ELISA:1:1000-1:2000, IHC:1:15-1:50

**Protein Background:**

This gene encodes a transcription factor that is a member of the leucine zipper family of DNA binding proteins. This protein binds to the cAMP-responsive element (CRE), an octameric palindrome. It forms a homodimer or a heterodimer with c-Jun and stimulates CRE-dependent transcription. This protein is also a histone acetyltransferase (HAT) that specifically acetylates histones H2B and H4 in vitro; thus it may represent a class of sequence-specific factors that activate transcription by direct effects on chromatin components. Several alternatively spliced transcript variants have been found for this gene.

**Gene ID:**

ATF2

**Uniprot**

P15336

**Synonyms:**

activating transcription factor 2

**Immunogen:**

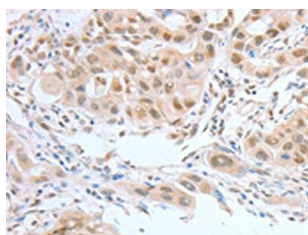
Fusion protein of human ATF2.

**Storage:**

-20°C; C, pH7.4 PBS, 0.05% NaN3, 40% Glycerol

## Product Images

---



The image on the left is immunohistochemistry of paraffin-embedded Human lung cancer tissue using PACO14116(ATF2 Antibody) at dilution 1/15, on the right is treated with fusion protein. (Original magnification: x—200).