

# ATP4B Antibody



PACO14119

---

## Product Information

**Size:**

50ul

**Reactivity:**

Human, Mouse, Rat

**Source:**

Rabbit

**Isotype:**

IgG

**Applications:**

ELISA, WB, IHC

**Recommended dilutions:**

ELISA:1:1000-1:2000, WB:1:200-1:1000,  
IHC:1:25-1:100

**Protein Background:**

The protein encoded by this gene belongs to a family of P-type cation-transporting ATPases. The gastric H<sup>+</sup>, K<sup>+</sup>-ATPase is a heterodimer consisting of a high molecular weight catalytic alpha subunit and a smaller but heavily glycosylated beta subunit. This enzyme is a proton pump that catalyzes the hydrolysis of ATP coupled with the exchange of H<sup>(+)</sup> and K<sup>(+)</sup> ions across the plasma membrane.

**Gene ID:**

ATP4B

**Uniprot**

P51164

**Synonyms:**

ATPase, H<sup>+</sup>/K<sup>+</sup> exchanging, beta polypeptide

**Immunogen:**

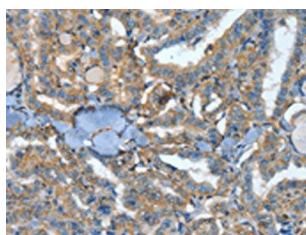
Fusion protein of human ATP4B.

**Storage:**

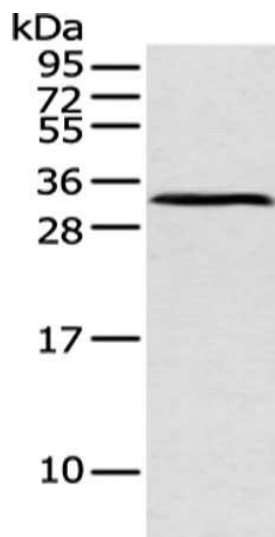
-20&deg; C, pH7.4 PBS, 0.05% NaN<sub>3</sub>, 40% Glycerol

## Product Images

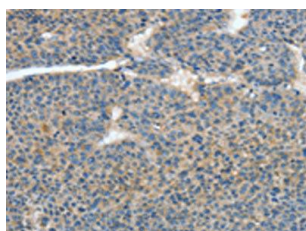
---



The image on the left is immunohistochemistry of paraffin-embedded Human thyroid cancer tissue using PACO14119(ATP4B Antibody) at dilution 1/40, on the right is treated with fusion protein. (Original magnification: x—200).



Gel: 12%SDS-PAGE, Lysate: 40 &mu; g, Lane: Mouse pancreas tissue, Primary antibody: PACO14119(ATP4B Antibody) at dilution 1/250 dilution, Secondary antibody: Goat anti rabbit IgG at 1/8000 dilution, Exposure time: 1 minute.



The image on the left is immunohistochemistry of paraffin-embedded Human liver cancer tissue using PACO14119(ATP4B Antibody) at dilution 1/40, on the right is treated with fusion protein. (Original magnification: x—200).