

PACO14164

Product Information

Size:

50ul

Reactivity:

Human, Mouse, Rat

Source:

Rabbit

Isotype:

IgG

Applications:

ELISA, WB, IHC

Recommended dilutions:

ELISA:1:1000-1:5000, WB:1:200-1:1000,
IHC:1:25-1:100

Protein Background:

The protein encoded by this gene is related to the *S. cerevisiae* CAP protein, which is involved in the cyclic AMP pathway. The human protein is able to interact with other molecules of the same protein, as well as with CAP2 and actin. Alternatively spliced transcript variants have been identified.

Gene ID:

CAP1

Uniprot

Q01518

Synonyms:

Adenylyl cyclase-associated protein 1

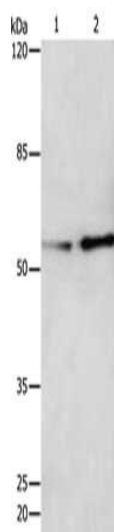
Immunogen:

Fusion protein of human CAP1.

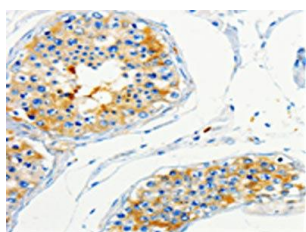
Storage:

-20° C, pH7.4 PBS, 0.05% NaN₃, 40% Glycerol

Product Images



Gel: 10%SDS-PAGE, Lysate: 30 μ g, Lane 1-2: HeLa cells, HepG2 cells, Primary antibody: PACO14164(CAP1 Antibody) at dilution 1/250, Secondary antibody: Goat anti rabbit IgG at 1/8000 dilution, Exposure time: 20 minutes.



The image on the left is immunohistochemistry of paraffin-embedded Human skin tissue using PACO14164(CAP1 Antibody) at dilution 1/50, on the right is treated with fusion protein. (Original magnification: x—200).