

PACO14227

---

## Product Information

**Size:**

50ul

**Reactivity:**

Human, Mouse, Rat

**Source:**

Rabbit

**Isotype:**

IgG

**Applications:**

ELISA, WB, IHC

**Recommended dilutions:**

ELISA:1:1000-1:5000, WB:1:500-1:2000,  
IHC:1:15-1:50

**Protein Background:**

The protein encoded by this gene is a member of the cyclin-dependent protein kinase (CDK) family. CDK family members are highly similar to the gene products of *Saccharomyces cerevisiae cdc28*, and *Schizosaccharomyces pombe cdc2*, and are known to be important regulators of cell cycle progression. This protein forms a trimeric complex with cyclin H and MAT1, which functions as a Cdk-activating kinase (CAK). It is an essential component of the transcription factor TFIIH, that is involved in transcription initiation and DNA repair. This protein is thought to serve as a direct link between the regulation of transcription and the cell cycle.

**Gene ID:**

CDK7

**Uniprot**

P50613

**Synonyms:**

cyclin-dependent kinase 7

**Immunogen:**

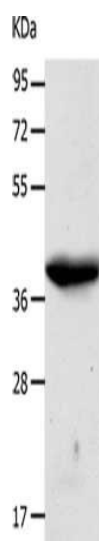
Fusion protein of human CDK7.

**Storage:**

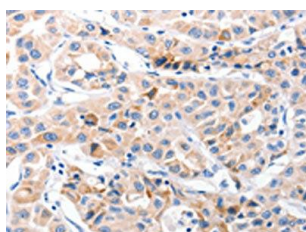
-20&deg; C, pH7.4 PBS, 0.05% NaN3, 40% Glycerol

## Product Images

---



Gel: 10%SDS-PAGE, Lysate: 60  $\mu$ g, Lane: A549 cells, Primary antibody: PACO14227(CDK7 Antibody) at dilution 1/500, Secondary antibody: Goat anti rabbit IgG at 1/8000 dilution, Exposure time: 2 minutes.



The image on the left is immunohistochemistry of paraffin-embedded Human lung cancer tissue using PACO14227(CDK7 Antibody) at dilution 1/30, on the right is treated with fusion protein. (Original magnification: x—200).