

PACO14250

---

## Product Information

**Size:**

50ul

**Reactivity:**

Human, Mouse, Rat

**Source:**

Rabbit

**Isotype:**

IgG

**Applications:**

ELISA, WB, IHC

**Recommended dilutions:**

ELISA:1:2000-1:5000, WB:1:500-1:2000,  
IHC:1:25-1:100

**Protein Background:**

Casein kinase II is a serine/threonine protein kinase that phosphorylates acid, c proteins such as casein. It is involved in various cellular processes, including cell cycle control, apoptosis, and circadian rhythms. The kinase exists as a tetramer and is composed of an alpha, an alpha-prime, and two beta subunits. The alpha subunits contain the catalytic activity while the beta subunits undergo autophosphorylation. The protein encoded by this gene represents the alpha subunit. While this gene is found on chromosome 20, a related transcribed pseudogene is found on chromosome 11. Three transcript variants encoding two different proteins have been found for this gene.

**Gene ID:**

CSNK2A1

**Uniprot**

P68400

**Synonyms:**

casein kinase 2, alpha 1 polypeptide

**Immunogen:**

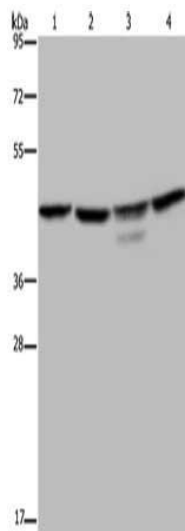
Fusion protein of human CSNK2A1.

**Storage:**

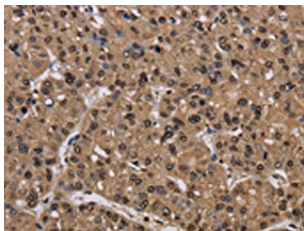
-20&deg; C, pH7.4 PBS, 0.05% NaN3, 40% Glycerol

## Product Images

---



Gel: 8%SDS-PAGE, Lysate: 40  $\mu$ g, Lane 1-4: K562 cells, 293T cells, Jurkat cells, mouse brain tissue, Primary antibody: PACO14250(CSNK2A1 Antibody) at dilution 1/300, Secondary antibody: Goat anti rabbit IgG at 1/8000 dilution, Exposure time: 10 seconds.



The image on the left is immunohistochemistry of paraffin-embedded Human liver cancer tissue using PACO14250(CSNK2A1 Antibody) at dilution 1/30, on the right is treated with fusion protein. (Original magnification: x—200).