

CMTM2 Antibody



PACO14252

Product Information

Size:

50ul

Reactivity:

Human

Source:

Rabbit

Isotype:

IgG

Applications:

ELISA, IHC

Recommended dilutions:

ELISA:1:1000-1:5000, IHC:1:50-1:200

Protein Background:

This gene belongs to the chemokine-like factor gene superfamily, a novel family that links the chemokine and the transmembrane 4 superfamilies of signaling molecules. The protein encoded by this gene may play an important role in testicular development.

Gene ID:

CMTM2

Uniprot

Q8TAZ6

Synonyms:

CKLF-like MARVEL transmembrane domain containing 2

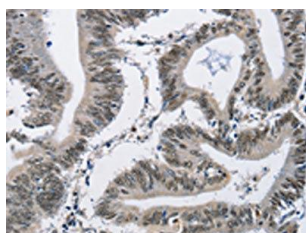
Immunogen:

Fusion protein of human CMTM2.

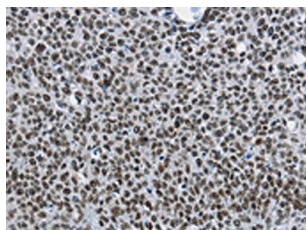
Storage:

-20° C, pH7.4 PBS, 0.05% NaN3, 40% Glycerol

Product Images



The image on the left is immunohistochemistry of paraffin-embedded Human colon cancer tissue using PACO14252(CMTM2 Antibody) at dilution 1/60, on the right is treated with fusion protein. (Original magnification: x—200).



The image on the left is immunohistochemistry of paraffin-embedded Human lung cancer tissue using PACO14252(CMTM2 Antibody) at dilution 1/60, on the right is treated with fusion protein. (Original magnification: x—200).