

CLEC1B Antibody



PACO14256

Product Information

Size:

50ul

Reactivity:

Human

Source:

Rabbit

Isotype:

IgG

Applications:

ELISA, IHC

Recommended dilutions:

ELISA:1:500-1:2000, IHC:1:10-1:50

Protein Background:

Natural killer (NK) cells express multiple calcium-dependent (C-type) lectin-like receptors, such as CD94 (KLRD1; MIM 602894) and NKG2D (KLRC4; MIM 602893), that interact with major histocompatibility complex class I molecules and either inhibit or activate cytotoxicity and cytokine secretion. CLEC2 is a C-type lectin-like receptor expressed in myeloid cells and NK cells.

Gene ID:

CLEC1B

Uniprot

Q9P126

Synonyms:

C-type lectin domain family 1 member B

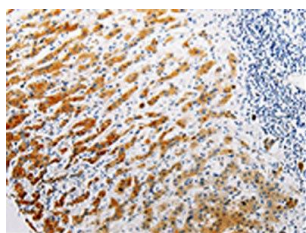
Immunogen:

Fusion protein of human CLEC1B.

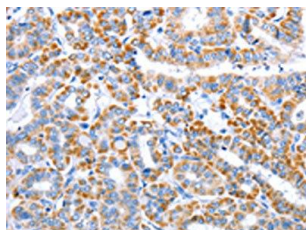
Storage:

-20° C, pH7.4 PBS, 0.05% NaN₃, 40% Glycerol

Product Images



The image on the left is immunohistochemistry of paraffin-embedded Human liver cancer tissue using PACO14256(CLEC1B Antibody) at dilution 1/15, on the right is treated with fusion protein. (Original magnification: x—200).



The image on the left is immunohistochemistry of paraffin-embedded Human thyroid cancer tissue using PACO14256(CLEC1B Antibody) at dilution 1/15, on the right is treated with fusion protein. (Original magnification: x—200).