

PACO14258

Product Information

Size:

50ul

Reactivity:

Human

Source:

Rabbit

Isotype:

IgG

Applications:

ELISA, IHC

Recommended dilutions:

ELISA:1:2000-1:10000, IHC:1:100-1:300

Protein Background:

This gene encodes a member of the natural killer cell receptor C-type lectin family. The encoded protein inhibits osteoclast formation and contains a transmembrane domain near the N-terminus as well as the C-type lectin-like extracellular domain. Several alternatively spliced transcript variants have been identified for this gene.

Gene ID:

CLEC2D

Uniprot

Q9UHP7

Synonyms:

C-type lectin domain family 2, member D

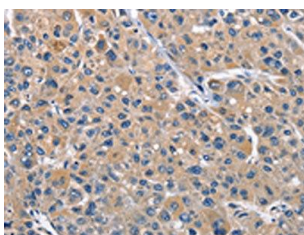
Immunogen:

Fusion protein of human CLEC2D.

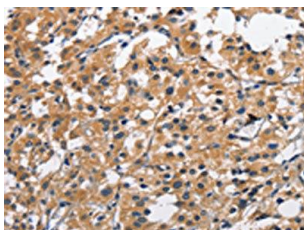
Storage:

-20° C, pH7.4 PBS, 0.05% NaN₃, 40% Glycerol

Product Images



The image on the left is immunohistochemistry of paraffin-embedded Human liver cancer tissue using PACO14258(CLEC2D Antibody) at dilution 1/70, on the right is treated with fusion protein. (Original magnification: x—200).



The image on the left is immunohistochemistry of paraffin-embedded Human thyroid cancer tissue using PACO14258(CLEC2D Antibody) at dilution 1/70, on the right is treated with fusion protein. (Original magnification: x—200).