

Product Information

Size:

50ul

Reactivity:

Human, Mouse

Source:

Rabbit

Isotype:

IgG

Applications:

ELISA, WB, IHC

Recommended dilutions:

ELISA:1:2000-1:5000, WB:1:200-1:1000,
IHC:1:50-1:200

Protein Background:

CLDND1 (claudin domain containing 1), also known as C3orf4 or HSPC174, is a 253 amino acid, multi-pass membrane protein that is expressed at high levels in adult brain and at lower levels in adult heart. Existing as two alternatively spliced isoforms, CLDND1 is encoded by a gene that maps to human chromosome 3, which houses over 1,100 genes, including a chemokine receptor (CKR) gene cluster and a variety of human cancer-related gene loci. Key tumor suppressing genes on chromosome 3 include those that encode the apoptosis mediator RASSF1, the cell migration regulator HYAL1 and the angiogenesis suppressor SEMA3B. Marfan Syndrome, porphyria, von Hippel-Lindau syndrome, osteogenesis imperfecta and Charcot-Marie-Tooth Disease are a few of the numerous genetic diseases associated with chromosome 3.

Gene ID:

CLDND1

Uniprot

Q9NY35

Synonyms:

claudin domain containing 1

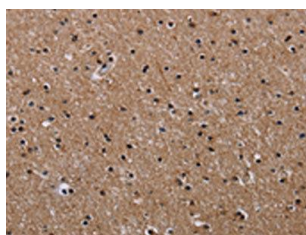
Immunogen:

Fusion protein of human CLDND1.

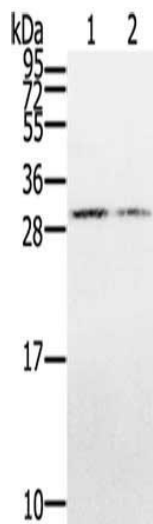
Storage:

-20° C, pH7.4 PBS, 0.05% NaN₃, 40% Glycerol

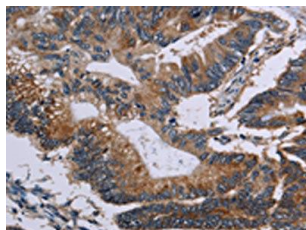
Product Images



The image on the left is immunohistochemistry of paraffin-embedded Human brain tissue using PACO14274 (CLDND1 Antibody) at dilution 1/50, on the right is treated with fusion protein. (Original magnification: x—200).



Gel: 12% SDS-PAGE, Lysate: 40 μ g, Lane 1-2: Hepg2 cells, K562 cells, Primary antibody: PACO14274 (CLDND1 Antibody) at dilution 1/500, Secondary antibody: Goat anti rabbit IgG at 1/8000 dilution, Exposure time: 3 minutes.



The image on the left is immunohistochemistry of paraffin-embedded Human colon cancer tissue using PACO14274 (CLDND1 Antibody) at dilution 1/50, on the right is treated with fusion protein. (Original magnification: x—200).