

Product Information

Size:

50ul

Reactivity:

Human, Mouse

Source:

Rabbit

Isotype:

IgG

Applications:

ELISA, WB, IHC

Recommended dilutions:

ELISA:1:1000-1:5000, WB:1:200-1:1000,
IHC:1:10-1:50

Protein Background:

This gene encodes a 28S subunit protein that also participates in apoptotic pathways which are initiated by tumor necrosis factor-alpha, Fas ligand, and gamma interferon. This protein potentially binds ATP/GTP and might be a functional partner of the mitoribosomal protein S27. Multiple alternatively spliced transcript variants encoding distinct isoforms have been found for this gene. Pseudogenes corresponding to this gene are found on chromosomes 1q and 2q.

Gene ID:

DAP3

Uniprot

P51398

Synonyms:

death associated protein 3

Immunogen:

Fusion protein of human DAP3.

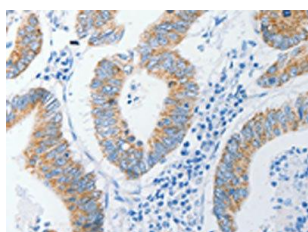
Storage:

-20° C, pH7.4 PBS, 0.05% NaN3, 40% Glycerol

Product Images



Gel: 12%SDS-PAGE, Lysate: 30 μ g, Lane: Human lymphoma tissue, Primary antibody: PACO14335(DAP3 Antibody) at dilution 1/150, Secondary antibody: Goat anti rabbit IgG at 1/8000 dilution, Exposure time: 20 seconds.



The image on the left is immunohistochemistry of paraffin-embedded Human colon cancer tissue using PACO14335(DAP3 Antibody) at dilution 1/15, on the right is treated with fusion protein. (Original magnification: x—200).