

## Product Information

**Size:**

50ul

**Reactivity:**

Human, Mouse

**Source:**

Rabbit

**Isotype:**

IgG

**Applications:**

ELISA, WB, IHC

**Recommended dilutions:**

ELISA:1:1000-1:5000, WB:1:200-1:1000,  
IHC:1:25-1:100

**Protein Background:**

DTX3 functions as an E3 ubiquitin ligase. It is regulator of Notch signaling, a signaling pathway involved in cell-cell communications that regulates a broad spectrum of cell-fate determinations. Probably acts both as a positive and negative regulator of Notch, depending on the developmental and cell context. Functions as an ubiquitin ligase protein in vitro, suggesting that it may regulate the Notch pathway via some ubiquitin ligase activity.

**Gene ID:**

DTX3

**Uniprot**

Q8N9I9

**Synonyms:**

deltex homolog 3 (Drosophila)

**Immunogen:**

Fusion protein of human DTX3.

**Storage:**

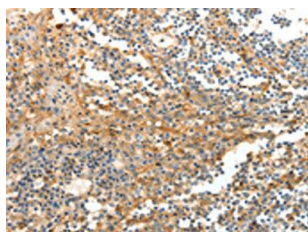
-20&deg; C, pH7.4 PBS, 0.05% NaN3, 40% Glycerol

## Product Images

---



Gel: 10%SDS-PAGE, Lysate: 40  $\mu$ g, Lane: SKOV3 cells, Primary antibody: PACO14337(DTX3 Antibody) at dilution 1/200, Secondary antibody: Goat anti rabbit IgG at 1/8000 dilution, Exposure time: 10 minutes.



The image on the left is immunohistochemistry of paraffin-embedded Human tonsil tissue using PACO14337(DTX3 Antibody) at dilution 1/20, on the right is treated with fusion protein. (Original magnification: x—200).