

Product Information

Size:

50ul

Reactivity:

Human, Mouse, Rat

Source:

Rabbit

Isotype:

IgG

Applications:

ELISA, WB

Recommended dilutions:

ELISA:1:2000-1:5000, WB:1:500-1:2000

Protein Background:

The protein encoded by this gene is part of a signal transduction pathway downstream of receptor tyrosine kinases. The encoded protein is a scaffold protein that helps form a platform for the assembly of multiprotein signaling complexes. Two transcript variants encoding different isoforms have been found for this gene.

Gene ID:

DOK1

Uniprot

Q99704

Synonyms:

docking protein 1, 62kDa (downstream of tyrosine kinase 1)

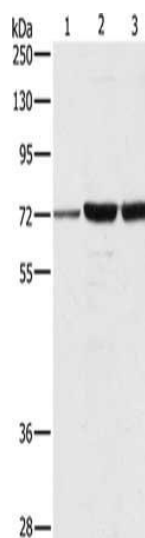
Immunogen:

Fusion protein of human DOK1.

Storage:

-20° C, pH7.4 PBS, 0.05% NaN₃, 40% Glycerol

Product Images



Gel: 8%SDS-PAGE, Lysate: 40 μ g, Lane 1-3: A375 cells, 231 cells, hela cells, Primary antibody: PACO14352(DOK1 Antibody) at dilution 1/750, Secondary antibody: Goat anti rabbit IgG at 1/8000 dilution, Exposure time: 10 minutes.