

PACO14448

Product Information

Size:

50ul

Reactivity:

Human

Source:

Rabbit

Isotype:

IgG

Applications:

ELISA, IHC

Recommended dilutions:

ELISA:1:2000-1:5000, IHC:1:50-1:200

Protein Background:

The protein encoded by this gene is a soluble beta-galactoside binding lectin. The encoded protein is found as a homodimer and can bind to lymphotoxin-alpha. A single nucleotide polymorphism in an intron of this gene can alter the transcriptional level of the protein, with a resultant increased risk of myocardial infarction. This protein binds beta-galactoside. Its physiological function is not yet known.

Gene ID:

LGALS2

Uniprot

P05162

Synonyms:

ectin, galactoside-binding, soluble, 2

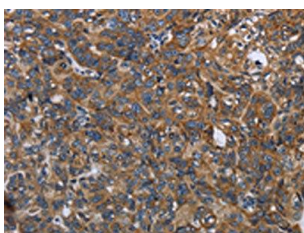
Immunogen:

Fusion protein of human LGALS2.

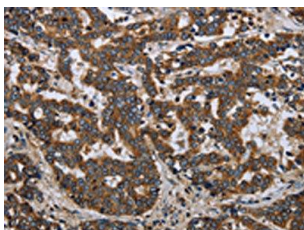
Storage:

-20° C, pH7.4 PBS, 0.05% NaN3, 40% Glycerol

Product Images



The image on the left is immunohistochemistry of paraffin-embedded Human ovarian cancer tissue using PACO14448(LGALS2 Antibody) at dilution 1/30, on the right is treated with fusion protein. (Original magnification: x—200).



The image on the left is immunohistochemistry of paraffin-embedded Human liver cancer tissue using PACO14448(LGALS2 Antibody) at dilution 1/30, on the right is treated with fusion protein. (Original magnification: x—200).